

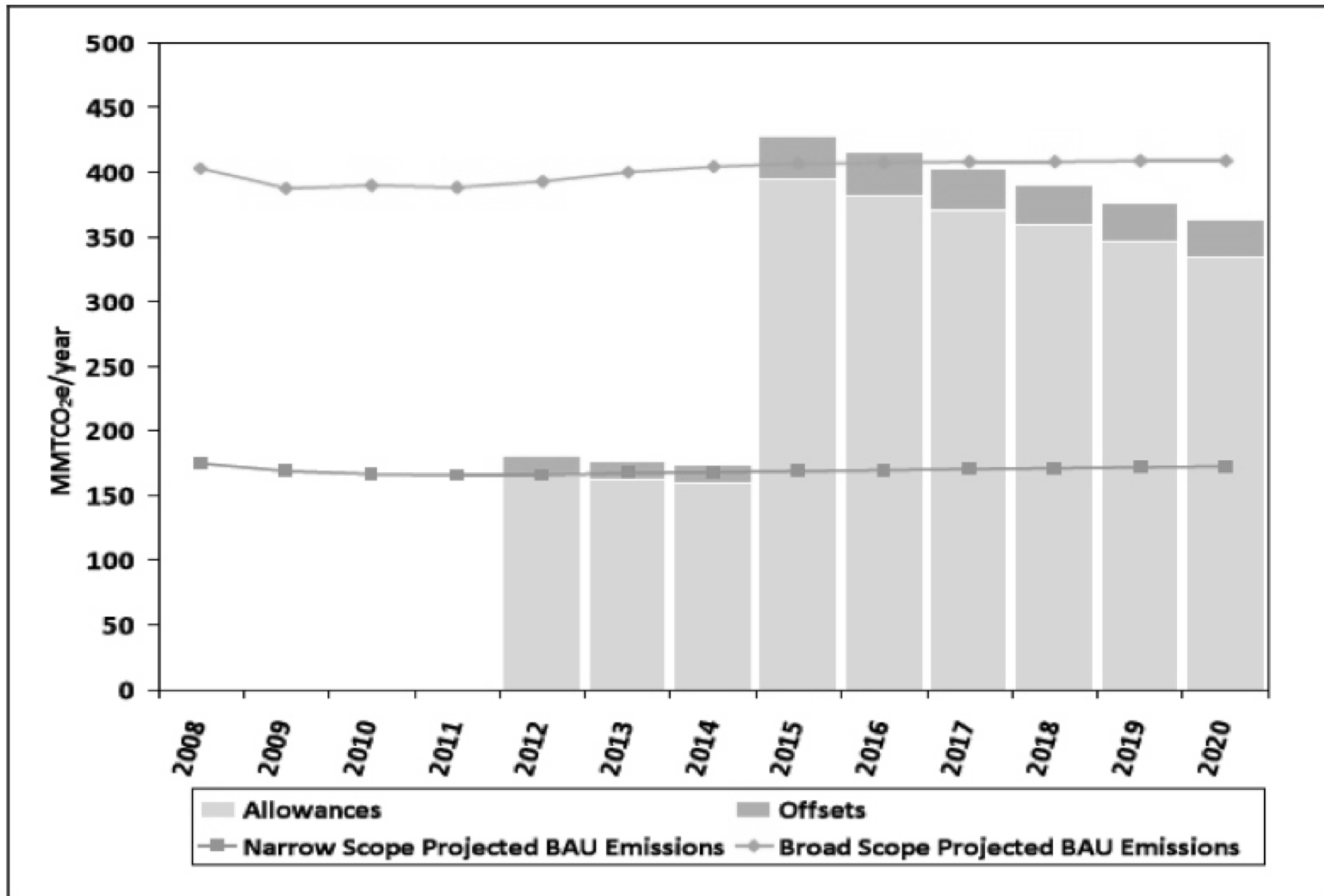
Landscape Toolkit for Rural Communities:

The Carbon Market & Harvego Bear River Preserve

Overview

- Placing a Price on Pollution
- Demonstrating the Value of Ecosystem Services
- Making the Case - Harvego Bear River Preserve
- Layering the Benefits for Long Term Success

Placing a Price on Pollution



Demonstrating Value...

- Offsets
 - Four initial offset protocols adopted:
 - Forestry
 - Urban Forestry
 - Livestock Management
 - Ozone-depleting substances

Demonstrating Value...

- Offsets
 - Four initial offset protocols adopted:
 - **Forestry**
 - Urban Forestry
 - Livestock Management
 - Ozone-depleting substances

ATMOSPHERE

WOOD PRODUCTS



Wood products store carbon



BIO-ENERGY



Clean bio-energy is produced from mill and forest residues

Healthy Forests Store Carbon

Decaying Forests Release Carbon



Cars and factories emit carbon



Old forests slowly release their stored carbon as they decay

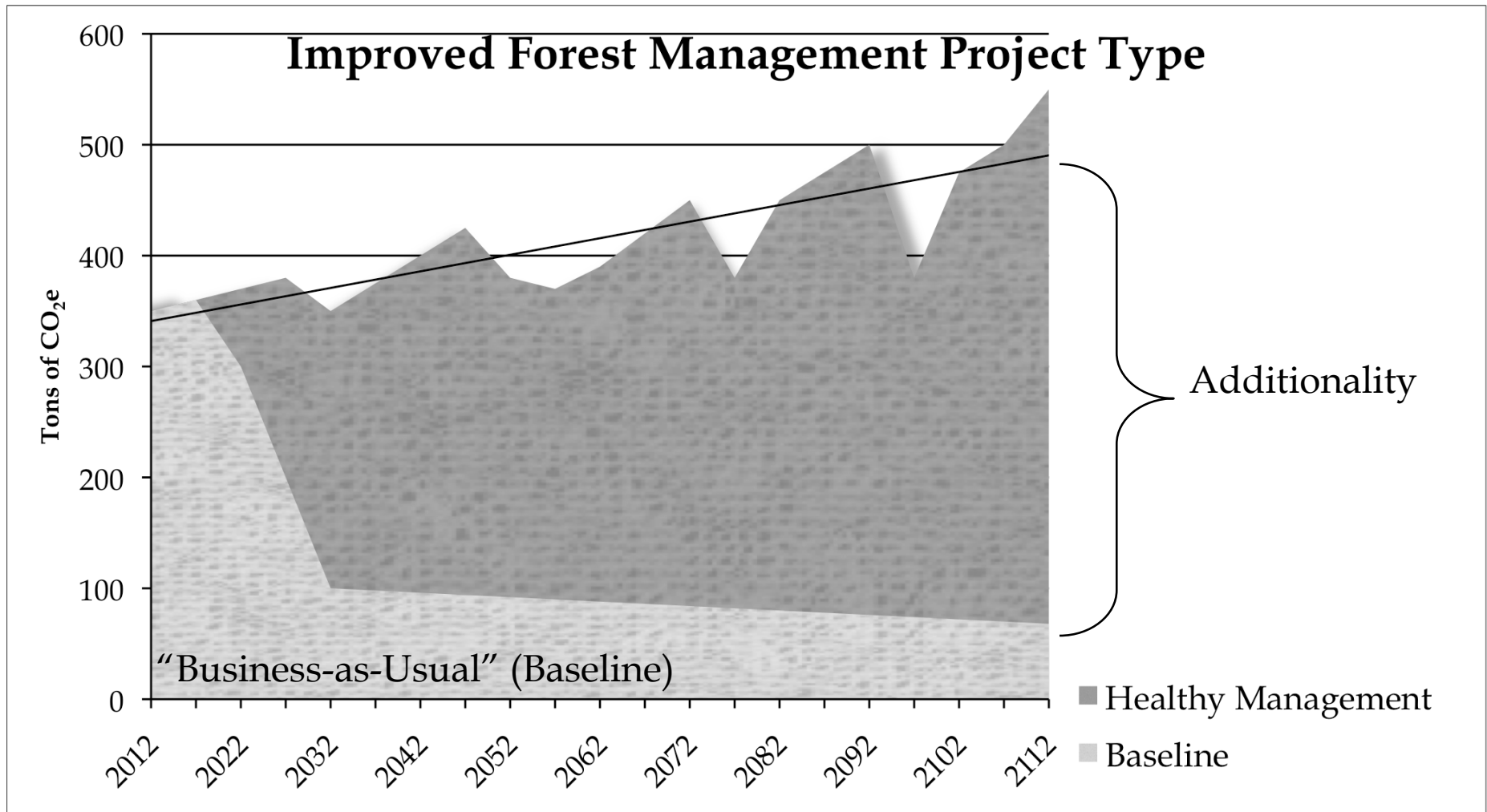


Growing forests absorb carbon and release oxygen



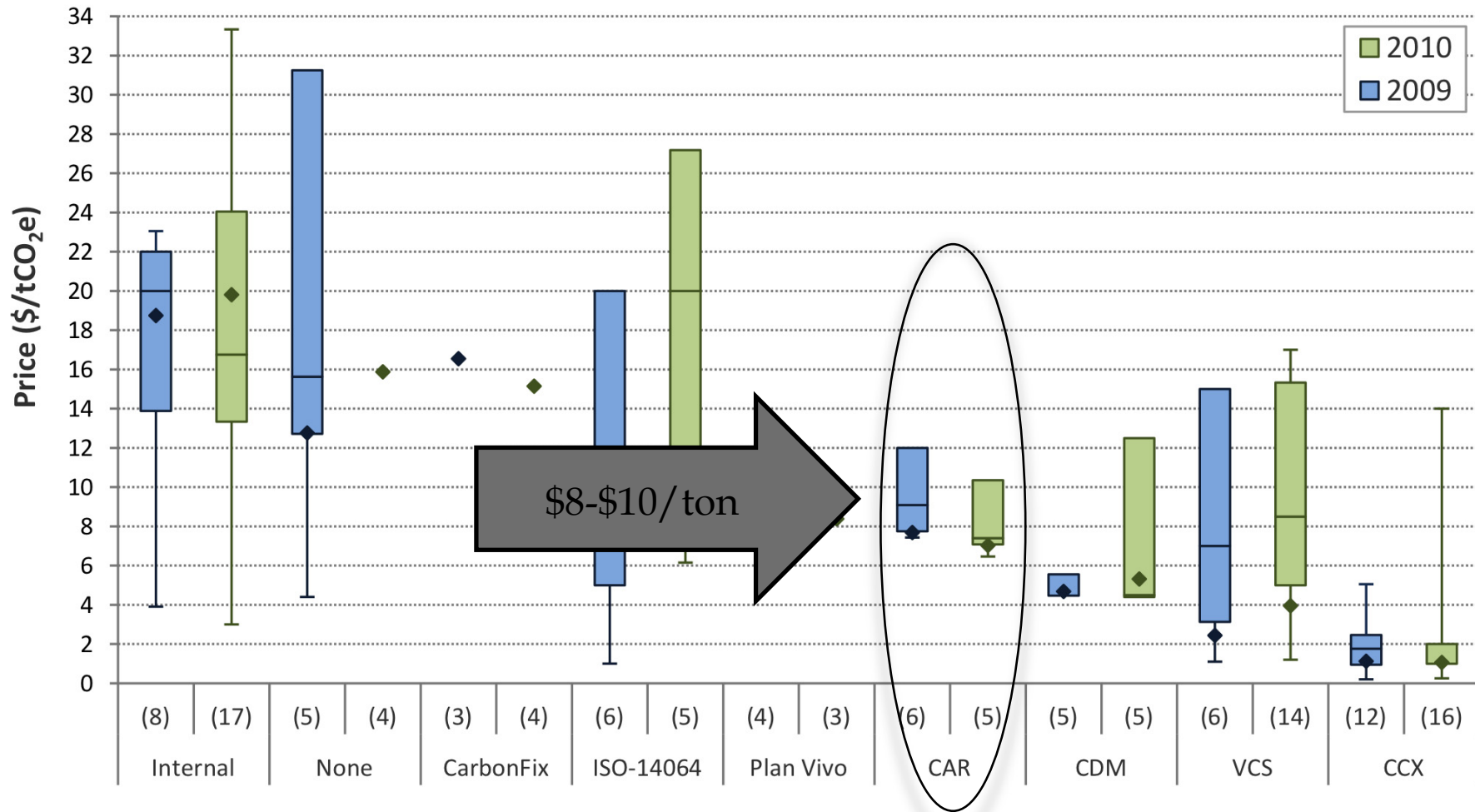
Reforestation and sustainable forest management practices ensure the carbon cycle continues

Demonstrating Value



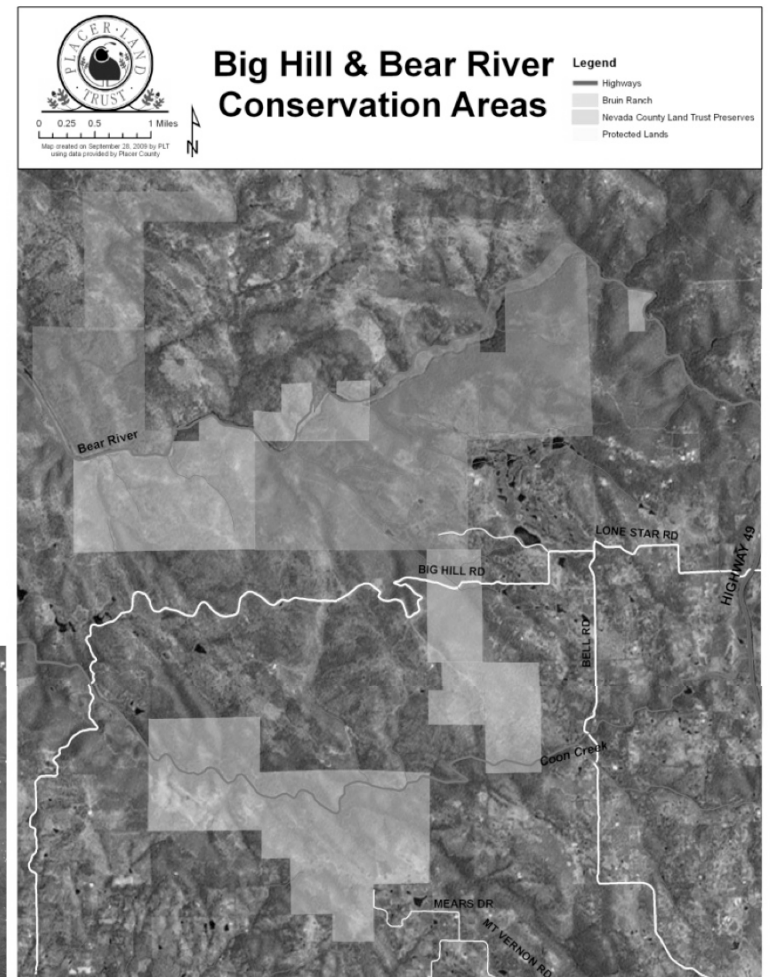
Demonstrating Value...

Figure 4: Price Distribution by Carbon Accounting Standard Applied in 2009 and 2010



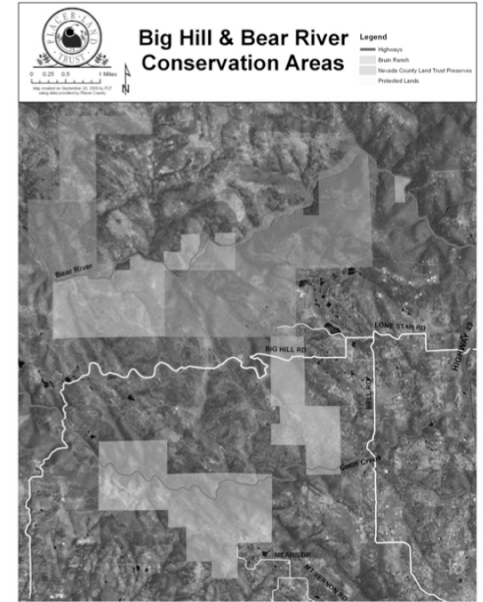
Source: State of the Forest Carbon Market 2011 - Ecosystem Marketplace

A Case Study - Harvego Bear River Preserve



Working Together

- Northern Foothills Partnership
 - Bear Yuba Land Trust, Trust for Public Land
- Wildlife Conservation Board
 - Grantee – Covenant of Interest
- Placer County
 - Conservation Easement Holder
- Natural Resource Conservation District
 - Oak Woodlands Forest Carbon Project (Inventory White Paper)
- Sierra Business Council
 - Forest Carbon Project Developer



Long Term Management

- Placer Land Trust responsible for all Forest and Land Management activities:
 - Wildland-Urban Interface
 - Reduce Reversal Risk
 - Open space/recreational use
 - Healthy and Sustainable Forest Management
 - Working Cattle Ranch

= \$\$\$

Layering the Benefits

- Example Forest Carbon Offset Project
 - \$8 - \$10 per metric ton of CO₂e
 - Baseline Scenario: Removal for Fuelwood
 - Project Activity: Improved Forest Management Activities
 - 30 tons C/acre = 53,190 tons of Carbon = 195,207 tons CO₂e

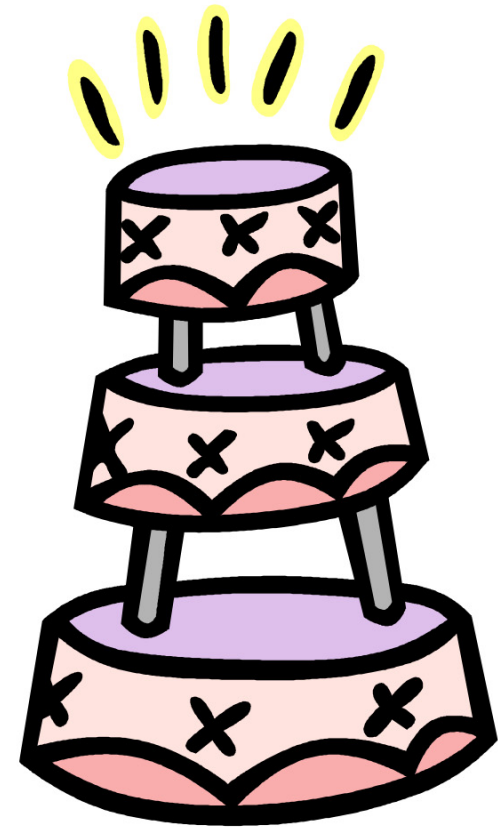
$$195,207 * \$8/\text{ton} = \mathbf{\$1.5 \text{ million}}$$

Layering the Benefits

- Placer County:
 - General Plan Update
 - “Qualified Greenhouse Gas Emissions Reduction Strategy”
 - “Mitigate significant impacts” = Purchase Offsets
 - Placer County Conservation Plan Goals
 - Maintain diverse ecosystems, and rare species habitat
 - Avoid potential conflicts between economy, community, and environment

Layering the Benefits

- Economic:
 - Forest Carbon Offset Revenue
 - Biomass Utilization
 - Working Cattle Ranch
 - Potential for Mitigation Banking
- Environmental:
 - Reduced Fragmentation
 - Conservation of T&E species
- Social:
 - Reduce wildfire risk
 - Open Space/Recreation
 - Historic Site Conservation



Thank You!!!

Christina Prestella
Independent Consultant –
Sierra Nevada Carbon Cooperative
Sierra Business Council

prestella@gmail.com

www.sbcouncil.org
www.placerlandtrust.org